

CENTER MASS, INC.

Committed to Law Enforcement, Corrections & Military Rifle-Craft since 1996.

2004 PRODUCTS & SERVICES CATALOG



Home of the:



- Tactical Sharpshooters Rifle Rest
- Mini-Sharpshooters Rifle Rest
- Sharpshooters Urban Carry Bag
- Sharpshooters Moving Target System
- Sharpshooters Steel Reactive Targets
- Center Mass Training Institute

Dealer/Distributor of:

- Eagle Products
- EoTech Holo Graphic Sights
- CAPS Video Simulator
- ITC Marksmanship products
- Tactical Intervention Slings
- Sure Fire Flash Lights
- Ramik Enterprises
- Nikon Optics
- Bogen Tripods
- Uncle Mikes
- Trijicon Scopes & Sights
- and Many More...

To view pricing & our entire line of products, visit us on the web at

www.centermassinc.com

Order by phone, by fax, or online

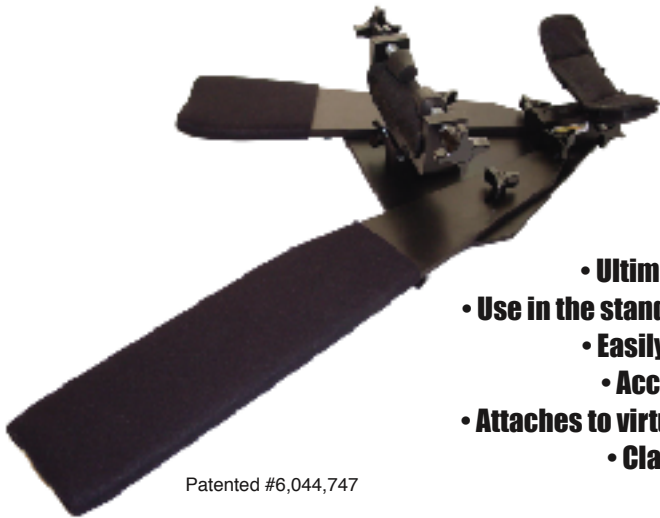


Agency Purchase Orders Also Accepted

6845 Woonsocket, Canton MI 48187

Phone: 1-800-794-1216 • Fax: 1-734-416-0650

TACTICAL SHARPSHOOTERS® RIFLE REST



Patented #6,044,747

- Ultimate urban sniping tool.
- Use in the standing, sitting or kneeling position.
- Easily track moving targets.
- Accepts most long guns.
- Attaches to virtually any camera or video tripod.
- Clamps weapon to rest.
- Weighs 10 lbs.



Sharpshooters® Urban Carry Bag



Completely padded, only available in khaki, removable "SURVEYOR" sign is standard, transports rifle & urban hide gear. Available separately or packaged with the Sharpshooters rifle rest & tripod equipment. Allows sniper to be completely self contained.



Above: Accommodates weapons 48" in length. Has muzzle guide & Velcro tie downs to keep weapon from moving.
Below: Equipment bag has four separated compartments to organize gear. Allows you to carry an entire roll of burlap or other shading material.



Urban Sniping Kit

SAVE 10%

Includes:

Sharpshooters Urban Carry Bag

- Does not look like standard weapons bag.
- Overtly deploy without raising suspicion.

Tactical Sharpshooters Rifle Rest. Video Tripod 3192

- Recommended for Police Sniping.
- Provides required stability.
- Head tilts to elevate & depress 15 degrees.
- Retractable spiked / hard rubber feet.
- Weighs 11 lbs. / Load capacity 44lbs.
- Elevates to 59" / Depresses to 36".



A typical elevated window shot requires snipers to build unreliable shooting platforms with materials found on scene. The Tactical Sharpshooters Rifle Rest shown here with video tripod 3192 gives your sniper a familiar, reliable, portable platform which will increase proficiency and decrease liability.

MINI-SHARPSHOOTERS® RIFLE REST



The Mini-Sharpshooters Rifle Rest is an essential piece of any snipers equipment. It is small enough to fit in a pocket. Attaches to virtually any camera tripod or monopod. Precision machined from aircraft grade aluminum. Aluminum is black anodized. The bean bag is constructed of 1000 denier Cordura. It cushions & cradles your weapon before and during firing. Weighs approx. 6 oz., 6" wide x 1.5" long x 1" high. Highly recommended for field craft and urban rifle work.

Recommended Accessories:

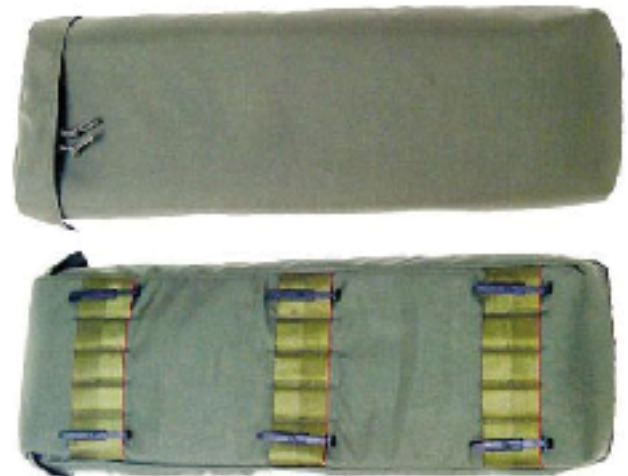
Tripod 3205GN3:

OD green in color. Elevates to 58.25". Depresses to 16". Weighs 4.85 lbs.. Load capacity is 11 lbs.. Has retractable spike / hard rubber feet. Has positive quick action/quite leg lock levers. Built extremely rugged for outdoor use.



Tripod carrier:

Constructed using 1000 denier Cordura. Padded with 1/4" closed cell foam. Dimensions: 7.75"x 24"x 3". Military style clips allow easy attachment to a drag bag or back pack. Compatible with Tripod 3205GN3 and the Mini-Sharpshooters Rifle rest.



SHARPSHOOTERS® MOVING TARGET SYSTEM



This portable lightweight moving target system is designed for indoor or outdoor use. It can be set up virtually anywhere in a matter of minutes. All weapon systems in your inventory can be used with the system (hand-gun, sub-gun, patrol rifle, less lethal, and sniper rifles). This system is a reliable low cost training aid that will benefit every facet of your agency's firearms training regiment. Instructors are only limited by their imagination & safety on the evolutions of training they can run using this system.

Specs/Features Include:

- 20ft. of track is sold standard.
- Track comes in 5ft sections. Additional 5ft sections of track can be purchased / added.
- Remote controlled out to 200+ yards.
- Variable speed controlled by rheostat (crawl, walk, run).
- Direction controlled by switch.
- Change direction on the fly
- Completely battery powered. Batteries typically last 2-6 hours depending on temperature and wind.
- 12v batteries with spares and charger provided.
- Sets up in 5-10 minutes. No tools required.
- Carrying / storage crates provided.
- 3 separate crates. Total weight: 180lbs
- Includes two target dollies. (Additional target dollies can be purchased separately. You provide the wooden 2" x 2"s, backers, & targets.)
- Works in all but the harshest weather conditions.
- Functional in winds up to 20mph.
- Temperatures from 20F to 95F.
- Functional in rain and light snow.
- Allow 8-12 weeks for delivery.

Sharpshooters® Steel Reactive Target - Rifle Grade

Specs/Features Include:

- 10" x 10" steel plate (.30 caliber or less - ball or bthp ammo no closer than 75 yards).
- Plate & stand sold separately.
- Plate mounts to a wooden 2" x 2" board. You provide the wood.
- Allows instructors to change height of target.
- Cheap replacement cost.
- Most ranges already have 2" x 2" stands.

30 day limited warranty (defects & workmanship)
 You will eventually wreck this product.
 You must consider it as an expendable training aid.





TRAINING DIVISION



Basic Rifle / Carbine User: \$299 – 2 or 3 days / 24 hours. Designed to teach the police officer basic rifle marksmanship, how to safely deploy & effectively operate the weapon in the patrol environment. Students will learn tactics for perimeter operations & CQB encounters. Every graduate will be proficient in the use of the weapon from various shooting positions from 7-100 yards. 500 rounds rifle / 100 pistol.

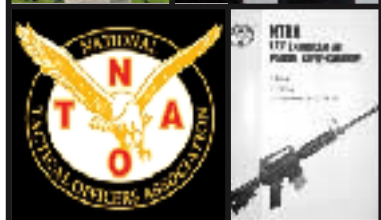


Patrol Rifle Instructor: \$575 - 5 days / 50+ hours. The course is designed to teach the basics of firearms instruction & enables the graduate to instruct basic rifle marksmanship to the police officer. Graduates will be able to make recommendations to administration on deployment, equipment & policy issues for the patrol environment. Every graduate will be proficient in the weapons use in various shooting positions from 7-100yds. Evolutions of fire include moving targets, night fire, and intermediate barrier engagements. This is performance based training and students must pass a graded oral presentation, written examination and course of fire. Further, students should already possess basic training and knowledge of their agencies patrol rifle. Current firearms instructors and tactical team members tend to excel in this course. 1000 rnds rifle / 200 pistol

Advanced Patrol Rifle Workshop: \$389 - 3 days / 30 hours. This school is designed as a continuing education & training event for patrol rifle operators that have already attended a basic patrol rifle school. All students receive a certificate of attendance and class ranking, as many events will be conducted for score. The focus of this training is a review on intermediate barriers, moving targets, positional shooting, officer survival techniques, judgment evolutions of fire, and night fire engagements. 500 rounds rifle ammunition / 200 pistol.

Patrol Rifle Seminar: \$99 –1 day / 8 hours. This course is a career progression seminar primarily designed for firearms instructors and patrol rifle operators. It addresses actual rifle engagements by law enforcement and the lessons that have been learned. Guest speakers debrief students on the shootings they or their agency have been involved in. Other topics can include training, equipment, and policy recommendations. This course is held in conjunction with our patrol rifle competition.

Patrol Rifle Competition: \$99 –1 day / 8-10 hours. The event is designed to test individual skill and your agencies training program. Evolutions of fire include moving targets, multiple adversaries, target identification, judgment/risk, and pure marksmanship. Shooters should be in good physical condition. No bipods, specially modified competition rifles, or hand loads allowed. All evolutions are 100 yards or closer. Shooters using optics will be handicapped. 100 rnds rifle / 10 pistol.



NTOA's Law Enforcement Patrol Rifle / Carbine Position Paper: Covers operational considerations, policy issues, ballistic information, equipment considerations, and training recommendations. Has sample users course and Center Mass, Inc.'s current qualification course of fire. THIS DOCUMENT WAS DONATED TO NTOA BY CENTER MASS, INC. & IS AUTHORED BY CENTER MASS INSTRUCTORS, JOHN PETERSON, MIKE TKAC, & JEFF FELTS. It is only available through the NTOA resource library & Center Mass, Inc.. Available on CD or a 50 page manual.

Basic Police Sniper School: \$599 - 5 days / 60+ hours. This school lays a solid educational and practical foundation. The focus is on operational tactics such as field-craft, observation, reporting, range estimation, urban tactics, and marksmanship skills with emphasis on the cold bore shot. Other areas of instruction include the mechanics of the rifle and scope, ballistics, the data book, hostage rescue engagements, intermediate barriers, positional shooting, and moving targets. This is performance based training requiring students to pass our cold bore evolutions of fire on days 2-3-4 with an average score of 60%, a comprehensive written examination, and our qualification course of fire which includes evolutions from 200 yards up to as close as 25 yard distances, various shooting positions, and moving targets. Students must be in good physical condition. 500 rounds.



Advanced Sniper Workshop: \$389 –3 days / 30-36 hours. This school is designed as a continuing education & training event for snipers that have already attended a basic police sniper school. All students receive a certificate of attendance and class ranking, as many events will be conducted for score. The focus of this training is a review on intermediate barriers, positional shooting, moving targets, and night fire engagements that culminate in numerous scenarios testing the snipers observation and reporting capability, judgment, and cold bore accuracy. It is recommended that agencies send snipers in pairs to gain the best training effect. 400 rounds of ammunition and all operational gear is required for this school.



Sniper Integration: \$99 –1 day / 8 hours. This seminar is designed for operational snipers, team leaders and police managers. It provides information regarding SWAT & sniper operations in an effort to educate Team Leaders and Dept. managers on how to best employ its sniper assets. Topics such as ideal sniper positioning, "the window of opportunity", the cranial vault theory, and intermediate barriers are presented in an effort to bring leaders on line with the training their snipers are receiving at many sniper schools. A review of sniper related incidents from around the country will take place that include the good, the bad, & the ugly.

• **Center Mass Training is Endorsed By the American Sniper Association and the International Association for Counter-Terrorism & Security Professionals.**

• **Center Mass Training is only open to Law Enforcement & military personal.**

• **Check our web site www.centermassinc.com for school dates and locations.**

• **Host agencies receive at least two free slots. Contact us if your interested in hosting a school.**

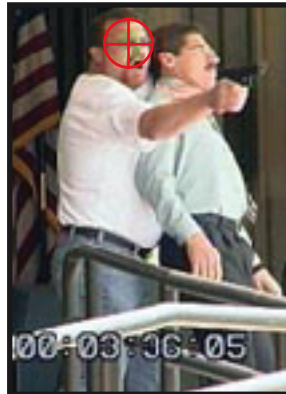
• **Instructors are active duty or retired police officers or military with extensive backgrounds in the subjects they teach.**

• **Instructors are also members of at least one of the following professional organizations: NTOA, ASA, ASLET, IALEFI, and IACSP.**

• **We offer a 15% discount on our training to members of the NTOA, ASA, MTOA, ITOA, & MLEFIAA upon request and verification of your affiliation.**



Live-Fire Video Simulation System



The CAPS III LCD live-fire simulation system hones your firearms and judgment skills with the actual firearms and ammunition you carry on the street. Your gun, your ammo, no excuses. This system has been tried and tested at Center Mass Sniper Schools. We highly recommend this simulator system as it is: Portable, usable indoors or outdoors, low cost compared to other simulators on the market, comes with over 300 scenarios, has the capability to allow you to produce your own scenarios, requires no firearm modifications, can be used from 0-100 yards, has replay capability, shows exact shot placement and officer reaction time, simple to operate, low maintenance, allows judgment training using all force continuum options, and its usable with virtually every firearm in your departments arsenal. All that is required is a power source and a method of keeping light from striking the surface of the projection screen. You won't be reaching for a paintball or laser gun on the street. Hone your firearms and judgment skills using your weapons and ammunition. Handgun, shotgun, carbine, sub-gun, and rifle compatible.

Patrol Rifle/Carbine Accessories



This holographic sight system is a true "heads-up" display that allows fast & accurate acquisition of potential threats. Powered by 2 AA batteries this system comes standard with a 2D retical pattern and interfaces with standard 1" Weaver dovetail/Picatinny rails. This sight employs a 65 m.o.a. ring which assists in quickly centering your target & a 1 m.o.a. dot that combines eye recognition, speed and precision aiming. Model 550 is night vision compatible. Mounting solutions for most weapons used by LE are available. Tried & tested at Center Mass Patrol rifle schools. Highly recommended for patrol rifle, less lethal weapons, and SWAT applications.



We offer Surefire's entire line of Millennium replacement forends for COLT CARBINES & RIFLES. This weapon light offers optimum beam spread and power for CQB & perimeter operations. They come standard w/momentary pressure "On/Off" & constant "On" switches. They also feature a disable switch for transportation. Powered by 3 lithium batteries.



Eagles Tactical sling can be carried in an assault position or hung position. Easy transition to handgun or immediate hands on situations. Idea for CQB environment. Includes anti-noise features and has a quick disconnect. Adjustable for size. Specify weapon for correct mounting hardware.

SNIPER ACCESSORIES



The Shooters Stock Pack features heavy elastic loops to hold 5 rnds of .308 ammo. A zippered compartment for misc. items. A non-slip lammy suede cheek pad, 3 adjustable tension straps w/mil. Spec. hook & loop fasteners.



The M24 Quick Cuff Sling is the result of 20 years of NRA high power shooting, hunting, & sniper experience. Its detachable cuff gives you the ability to quickly take up the steady loop sling position. The nylon webbing is 1.5" wide. It comes standard w/heavy duty swivels already sewn into the sling.



Know your angles before you take the shot and give yourself another edge on accuracy. The Levo-gage shows +45 degrees and -45 degrees of angle in 5 degree increments. Can be temporarily attached to the rifle using velcro (provided). Fits inside Eagle Shooters stock Pack.



Data Book #1 (red logo): This book provides the foundation for training documentation, observation techniques and precision shooting development. It is printed on heavy cardstock with 68 double-sided pages. Features include a three ring binder, black cordura cover with inside pouch for pens & pencils. This book measures 9"x7"x1.5" and fits nicely into most drag bags or BDU trouser utility pocket. Includes cold bore log, temp log, come-ups, mover log, angle data log, range estimation reference log, sight picture reference log, pre-printed range cards, bullet drop log, windage chart, mil dot chart, multiple training logs, bullet log, & a post ballistic data card should you have to take a shot on an operation.



Above: The Eagle Drag Bag was designed & built to meet the needs of the tactical sniper. 49" in length it is a completely self contained system for carrying your rifle and other gear. It is constructed out of heavy duty Cordura with mil Spec webbing & hardware throughout. Fits inside Pelican hard case 1750. Interior pouches hold ammo (.308) & a one-piece cleaning rod. Also features two large exterior pouches for larger gear. Includes padded carrying straps.

Below: Eagle's hybrid model padded scope cover with crown cover offers durability and protection for your expensive rifle and optics. Constructed using 1000 denier Cordura and 3/8" closed cell foam. The scope cover measures 17" W x 5" H with three 3/4" adjustment straps with side release buckles that allow you to fit nearly any rifle scope. The crown cover also adjusts out to accept a variety of barrel lengths. This model also has a 4.5" W x 4" flat pouch with snap closure for your scope adjustment tools.



Eagle's Hybrid Sniper Rifle Carrier (HSRC) is a combination rifle cover, rifle carrier, and shooting mat. The case is set up with heavy duty #10 YKK wrap around zipper. It is also designed to roll up and attach to an operators pack or web gear when its not being used to carry a rifle. Features include: Fold out knee mat, cleaning rod pocket, lammy suede for elbow positioning and stability, padded crown cover, one flat zipper utility pocket and one zipper utility pocket with elastic to hold 10 .308 caliber rounds. Also comes with padded carrying straps.

Above: The Hybrid Sniper Rifle Carrier is shown packed with Eagles Tripod Carrier Pouch & Binocular Carrier Pouch attached.

Below: The HSRC is completely folded out and ready to use.

CLOTHING



Ball Caps

Above: Black cap with embroidered tac. Eagle logo on front & USA flag on right side.

Below: Khaki low profile flexfit cap. Embroidered tac. Eagle on front w/1* logo on right side.



Sweat Shirts

Black long sleeve embroidered with our Tac. Eagle logo on the left chest. Pre-shrunk



Long Sleeve T-Shirt

Grey with our Senior Operator logo printed across the back & Tac. Eagle logo printed in OD green on the front left chest.



T-Shirt

Black short sleeve pre-shrunk. Embroidered with our Tac. Eagle logo on the left chest.



Polo

Grey short sleeve polo with our Tac. Eagle Logo embroidered on the left chest.

PINS, PATCHES & MORE

OPERATOR PINS 1.5" wide x 1" high

Silver

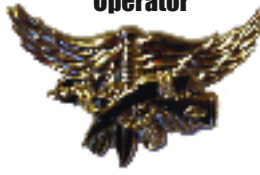
Antique Gold

Polished Gold

Operator

Operator

Operator



Senior Operator

Senior Operator

Senior Operator



Master Operator

Master Operator

Master Operator



RIFLE PINS 2" wide x .75" high

Sniper Pins

Silver & Antique Gold

Patrol Rifle Pins

Silver & Antique Gold



CHALLENGE COINS Silver Dollar Size

Sniper Coin

Those Who Dare Coin



Operator Coin (ant. gold)

Operator Coin (silver)



PATCHES

1* Patch

3" high x 2" wide



Those Who Dare Patch

3.75" high x 5" wide



Operator Patch

2" high x 3" wide



MISC.

Laser Etched Plaque

9" high x 7" wide



1* Pin

3/4" high x 1/2" wide



Sticker (white or black)

4.5" high x 6.75" wide

